

Photometric Report

MAC Encore Two – Narrow

MARTIN PROFESSIONAL R&D OPTICAL LABORATORY

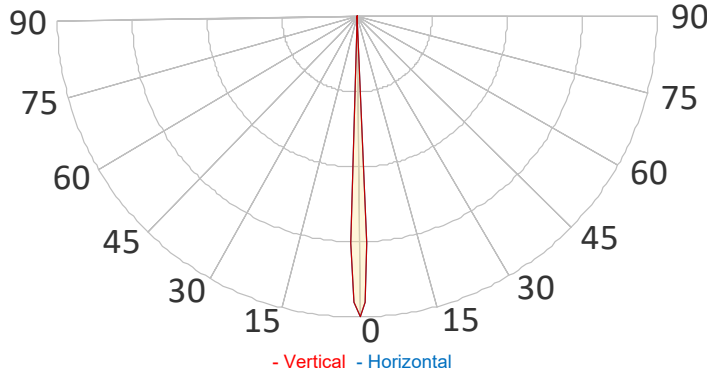
GENERAL SPECIFICATIONS

Total Fixture Output:	21000 lm
Light Engine Output:	57000 lm
Efficacy:	24.4 lm/W
Lens Option:	N/A
Beam Angle (50%):	5.1-51.9°
Field Angle (10%):	5.7-53.6°
Cut-off Angle (3%):	5.9-53.9°
CRI:	90 (+/-3)
TM-30 Rf:	90 (+/-3)
TM-30 Rg:	100 (+/-3)
TLCI:	90 (+/-3)
Color Temperature:	5600K (+/-300K)



SAMPLE MEASUREMENT

POLAR PLOT

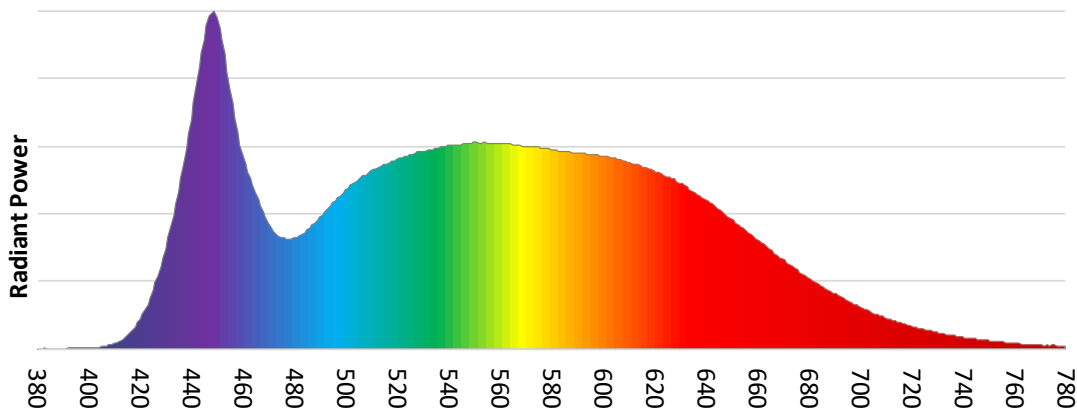


Catalog Number:	MAR-90250600HU
Measured Output:	12781 lm
Measured Peak:	1980227 cd
Consumed Power:	855 W
Efficacy:	14.9 lm/W

Beam Angle (50%):	5.1°
Field Angle (10%):	5.7°
Cut-off Angle (3%):	5.9°

Measurement Condition:	
Ambient Temperature:	25° +/- 5° C
AC Supply:	230V/50Hz
Fan Mode:	Regulated High
Fixture Warm-up Time:	30 minutes

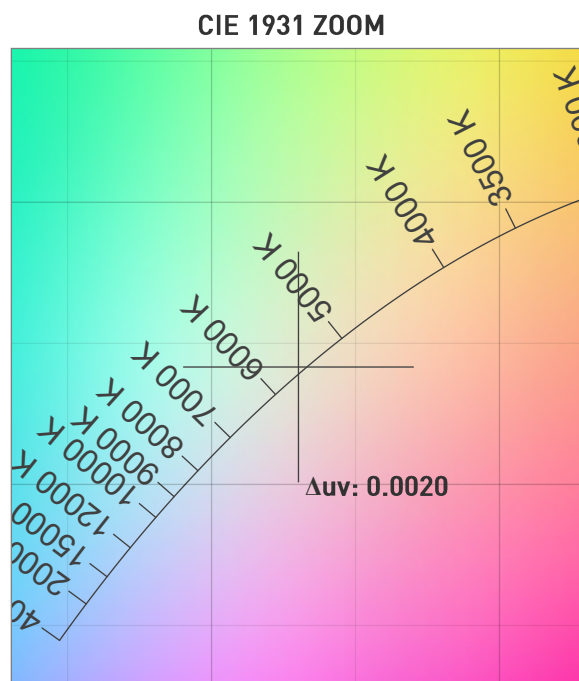
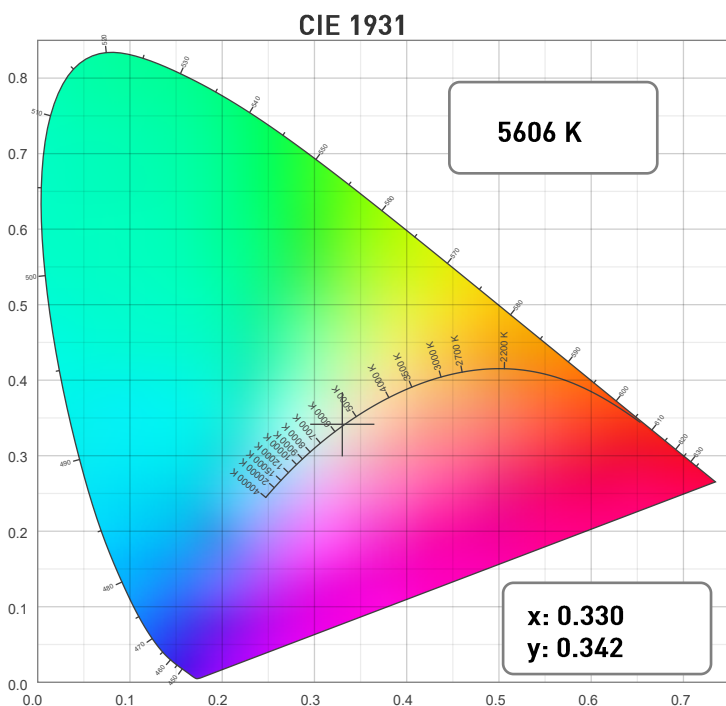
SPECTRAL DISTRIBUTION



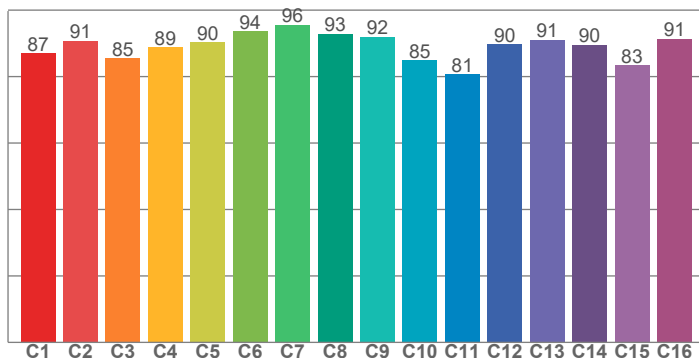
Photometric Report

MAC Encore Two – Narrow

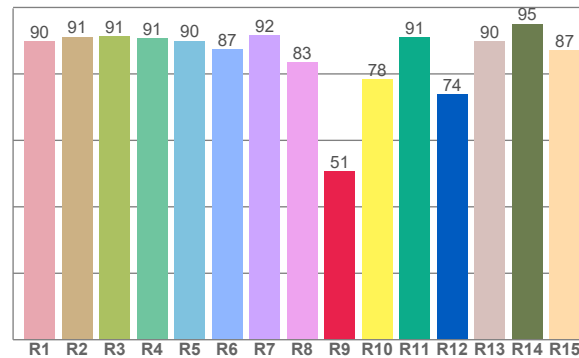
CHROMATICITY



TM30: 88.9



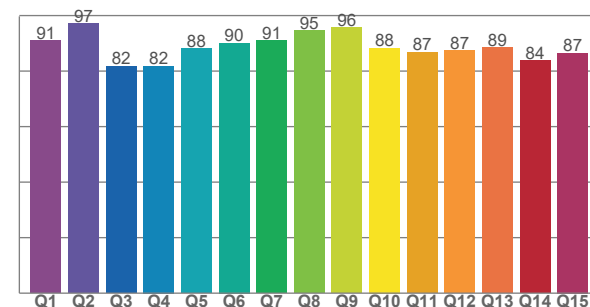
CRI: 89.4 (R1-R8)



COLOR PARAMETERS

Color Temperature	Color Rendering Index	Red Component	Color Fidelity	Color Gamut
CCT	CRI	CRI R9	TM30 Rf	TM30 Rg
5606 K	89.4	50.8	88.9	99.9

CQS: 88.0



Television Lighting Consistency Index	Color Quality Scale	Color Coordinate CIE 1931	Color Coordinate CIE 1931	Color Coordinate CIE 1964	Color Coordinate CIE 1964	Color Deviation from Black Body
TLCI	CQS	x	y	u	v	Δuv
91	88.0	0.330	0.342	0.205	0.318	0.0020

Photometric Report

MAC Encore Two – Narrow

TM30

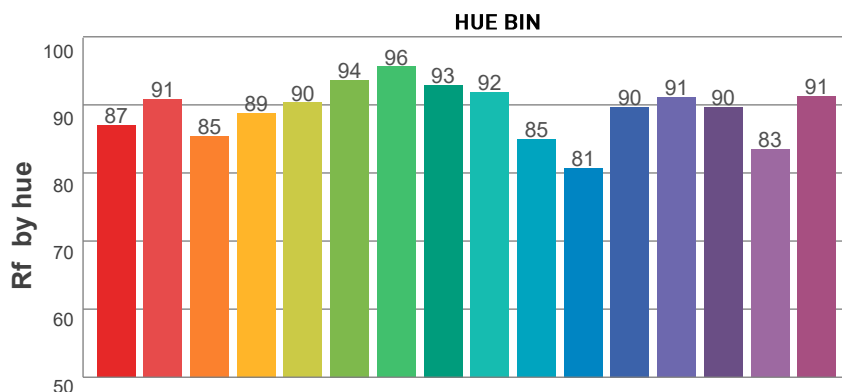
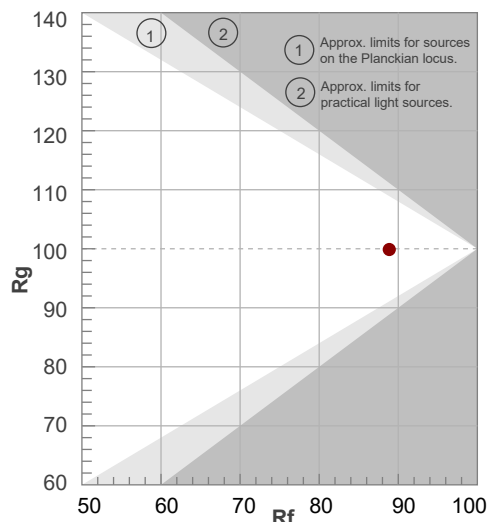
Rf 88.9

Fidelity index Rf

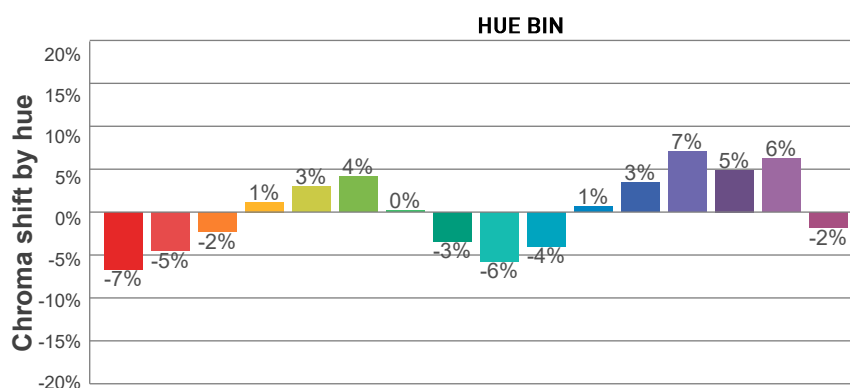
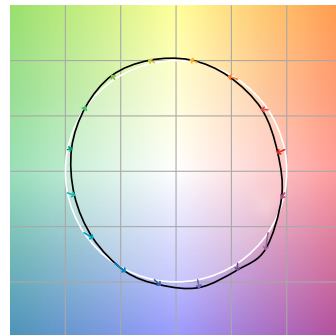
Rg 99.9

Gamut index Rg

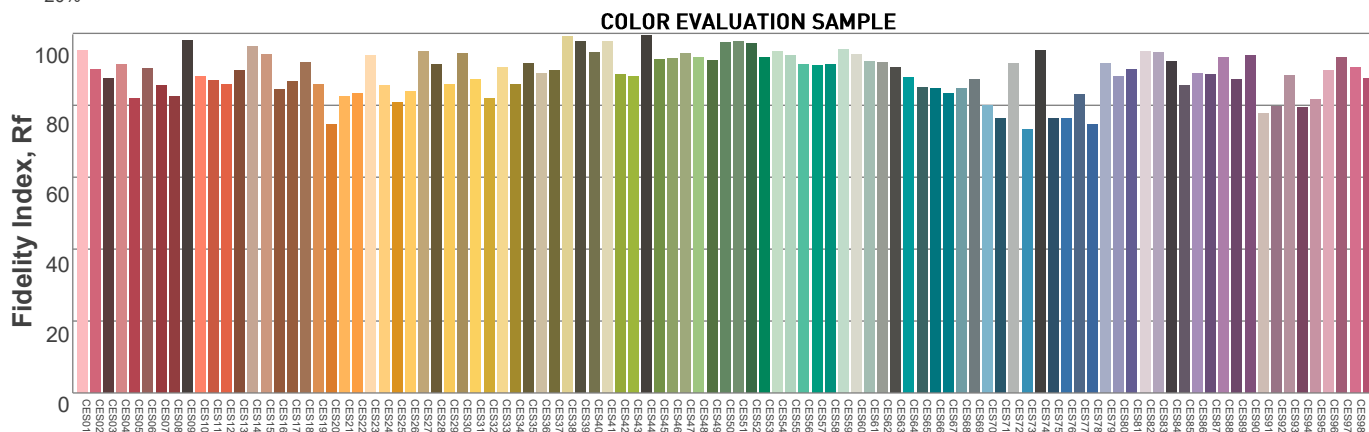
Hue Bin	R _f	Graphic shifts (%)	
		Chroma	Hue
1	87	-7%	-2%
2	91	-5%	4%
3	85	-2%	8%
4	89	1%	7%
5	90	3%	4%
6	94	4%	0%
7	96	0%	-3%
8	93	-3%	-2%
9	92	-6%	3%
10	85	-4%	8%
11	81	1%	12%
12	90	3%	6%
13	91	7%	0%
14	90	5%	-3%
15	83	6%	-14%
16	91	-2%	-5%



COLOR VECTOR GRAPHICS



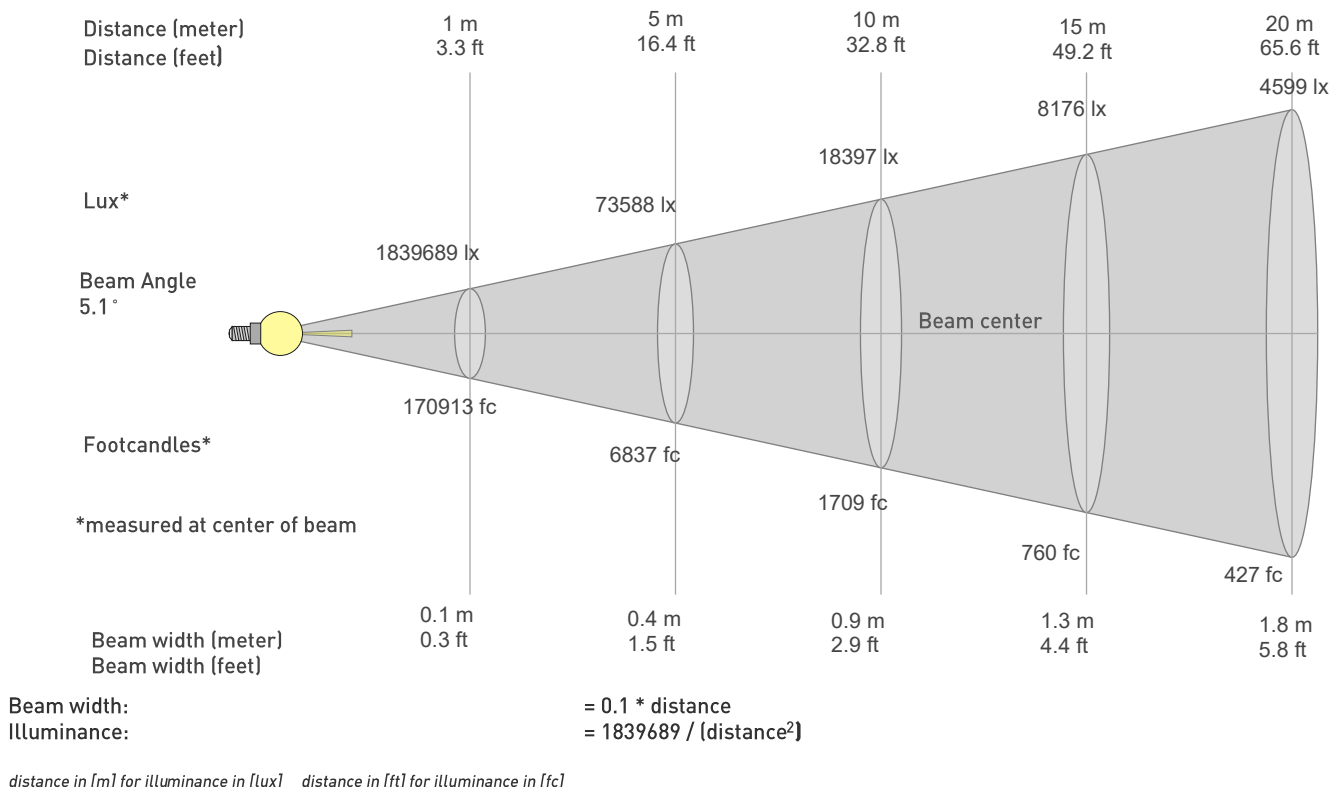
COLOR DISTORTION GRAPHICS



Photometric Report

MAC Encore Two – Narrow

BEAM DETAILS



BEAM ILLUMINANCE FROM 1-20M

1m	2m	3m	4m	5m	6m	7m	8m	9m	10m	11m	12m	13m	14m	15m	16m	17m	18m	19m	20m
3.3ft	6.6ft	9.8ft	13.1ft	16.4ft	19.7ft	23ft	26.2ft	29.5ft	32.8ft	36.1ft	39.4ft	42.7ft	45.9ft	49.2ft	52.5ft	55.8ft	59.1ft	62.3ft	65.6ft
1839689lx	459922lx	204410lx	114981lx	73588lx	51102lx	37545lx	28745lx	22712lx	18397lx	15204lx	12776lx	10886lx	9386lx	8176lx	7186lx	6366lx	5678lx	5096lx	4599lx
170912.7fc	42728.2fc	18990.3fc	10682fc	6836.5fc	4747.6fc	3488fc	2670.5fc	2110fc	1709.1fc	1412.5fc	1186.9fc	1011.3fc	872fc	759.6fc	667.6fc	591.4fc	527.5fc	473.4fc	427.3fc

